

1 2 3 4 5 6 7 8

REV	LOCATIONS	DESCRIPTION	DATE	REVISER	APPD

A

B

C

D

E

F

A

B

C

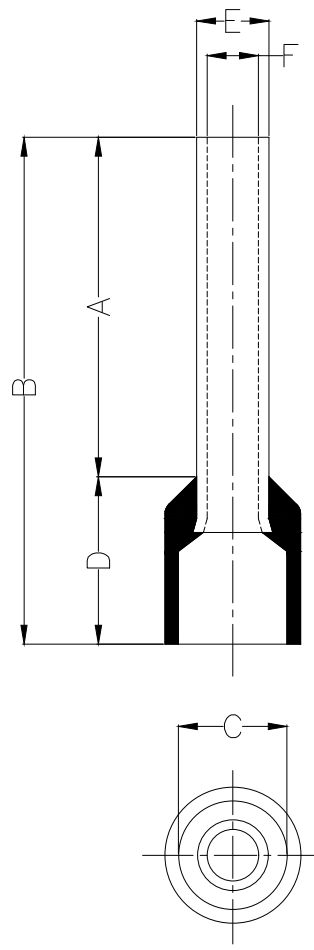
D

E

F

Notes:

Material: Copper  
 Insulator: PVC (UL 94V-0)  
 Plating: Bright tin plated  
 Maximum temperature: 75°C  
 Maximum electrical rating: 600V  
 Wire range: 1.5mm<sup>2</sup> / (16AWG)



Dimensions					
A	B	C	D	E	F
±1	±1	±0.5	±1	±0.5	±0.5
12.3	18.8	3.5	6.5	1.9	1.7

PART NO.	Color Of Insulator
FET02-001501200ARD8	Red
FET02-001501200ABU8	Blue
FET02-001501200ABK8	Black
FET02-001501200AWH8	White
FET02-001501200AGY8	Gray

	THIRD ANGLE PROJECTION
DESIGN UNITS	mm
SCALE	5:1
SIZE	A4

GENERAL TOLERANCES (UNLESS SPECIFIED)	
X. ±0.30	X.* ±5'
X.X ±0.20	X.X' ±2'
X.XX ±0.15	X.XX' ±1'
X.XXX ±0.10	X.XXX' ±0.5'

APPROVE BY	LEO	DATE	19/JAN/21
CHECKED BY	GISELLE	DATE	19/JAN/21
DRAWN BY	PYD	DATE	19/JAN/21

PART NO.	FET02-001501200AXX8	ITEM NO.	FET02
TITLE	Cord end terminal		

**TXGA**  
 Building Technology Cornerstone  
 REV 0 SHEET NO. 1/1  
 THIS DRAWING CONTAINS INFORMATION THAT IS PROPRIETARY TO TXGA INDUSTRIAL ELECTRONICS(S.Z)CO.,LTD AND SHOULD NOT BE USED WITHOUT WRITTEN PERMISSION

1 2 3 4 5 6 7 8